



1-2-LET



**BOTHWELL STREET,
%RENT%**

THE PINNACLE



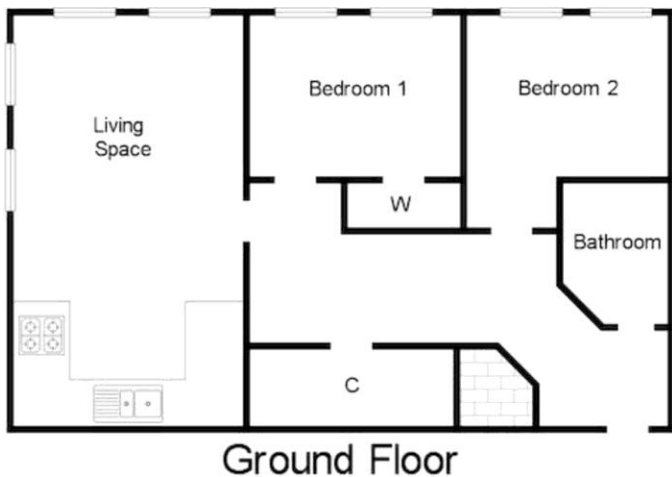


This is an exceptionally well presented furnished flat for let situated in the city centre of Glasgow and is enhanced by well proportioned newly decorated rooms. Buchanan Galleries and other shopping venues are only a short walk from the property and is ideally located for access to Central and Queen Street railway stations, motorways both west and east to other surrounding towns.

The accommodation which has been recently decorated and furnished comprises a inner entrance way leading to a good sized lounge, modern fitted kitchen with a range of base and wall units with contrasting work surfaces and a range of white goods and small kitchen appliances (off the lounge), 2 double bedrooms with fitted wardrobes, a tiled bathroom with instant shower over the bath.. The property further benefits from storage cupboards, gas central heating, double glazing, modern decor, laminate flooring, new carpets, white goods, lift to all floors and secure door entry system The location, standard and size makes this an ideal home for a small family or 2 business people to share

This property is to a very high standard and VIEWING IS A MUST.

%epcGraph_c_1_304%



Agents Note: Whilst every care has been taken to prepare these sales particulars, they are for guidance purposes only. All measurements are approximate are for general guidance purposes only and whilst every care has been taken to ensure their accuracy, they should not be relied upon and potential buyers are advised to recheck the measurements